

Expect more from
Pierremont Pharmacy

Come and visit us at our newly refurbished premises



FLU CLINIC

Flu season is upon us, book your annual flu jab with us for only £14.99

This year's flu jab also includes H1N1 (Swine Flu) which means you will be covered for both seasonal influenza and swine flu in just the one jab.



Don't worry! Although some people may experience a slight ache in the arm or cold/flu like symptoms for a short period after vaccination, the flu jab is inactive so you cannot actually catch the flu from the jab! It is designed to promote your body's natural response to the virus to protect you throughout the winter.

Please call or pop in for more details and bookings for appointments

Community Pharmacy for the 21st century

Prescriptions...

For your convenience we are open 100 hours a week...

Your repeat prescriptions collected and delivered **FREE**

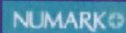
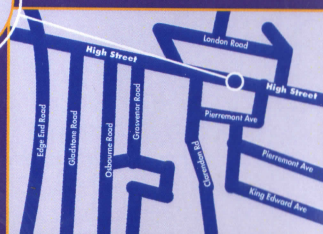
7am to 11pm Monday to Friday 7am to 9pm on Saturdays and 10am to 4pm on Sundays

Pierremont Pharmacy

73 - 75 High Street, Broadstairs, Kent CT10 1NQ
Telephone: (01843) 600309 Fax: (01843) 864426
Web: www.pierremontpharmacy.com
Email: info@pierremontpharmacy.com

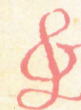


Where to find us



Ramsgate Operatic Society
Present

Gilbert



Sullivan's

PATIENCE

Tuesday 30th October to Saturday 3rd November 7.30pm

Saturday Matinee 2.30pm

Price: £1.50

Celebrating 60 years in Ramsgate

STANLEY'S GOLDSMITHS

6 HARBOUR STREET

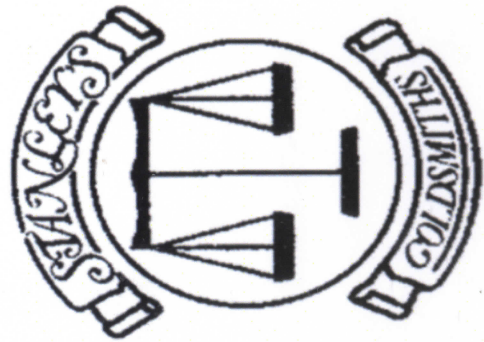
RAMSGATE

KENT

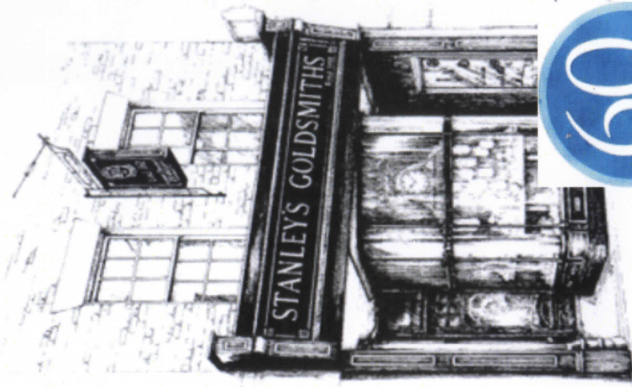
CT11 8HA

Tel: 01843 593103

*Purchaser & Valuer of Jewellery
Antique & Second-Hand Jewellery
Jewellery Repairs
Watch & Clock Repairs*



Established 1952



RAMSGATE OPERATIC SOCIETY

present

Patience

Or

Bunthorne's Bride

by

W.S.
GILBERT

&

ARTHUR
SULLIVAN

Musical Director

Bob Drywood

Directed by

Lynne Myhill

PLEASE NOTE: The taking of video, photographic or sound recording is not permitted

PLEASE ENSURE THAT ALL MOBILE PHONES ARE SWITCHED OFF

M.H. Building & Roofing Services

ROOF TILING-GUTTERING-BRICKWORK
POINTING - PROPERTY MAINTENANCE

M.P. Hayre

Tel: 01843 586625 mobile: 07836 645213
103, St James Avenue, Ramsgate, Kent CT12 6DZ

Harvest
Health
Foods

Best of luck with the show!

31 QUEEN STREET
RAMSGATE
KENT CT11 9DZ

TELEPHONE THANET
(01843) 583135

H. R. Palmer

(Miss I. E. Palmer)

Wish Ramsgate
Operatic Society
every success with their
production of
'Patience'

H.R. Palmer (funeral directors)
30, Hardres Street, Ramsgate CT11 8QF
01843 592720

CHAIRMAN'S MESSAGE

Welcome to our production of *Patience, or Bunthorne's Bride*. Gilbert and Sullivan were at their inventive best in this, the first of their comic operas to be played at D'Oyly Carte's new Savoy Theatre with its "electric lighting". When *Patience* transferred there from the Opera Comique it already held a record as the second-longest running piece of musical theatre ever (after *Les Cloches de Cornville!*). Songs and choruses from the show are often anthologised in "G & S" concerts, but it has been a great pleasure to put the whole piece together for you tonight.

Patience ridicules the aesthetic movement of the late 1870's and 80's including figures like Swinburne, Rossetti and the 'medievalist' Pre-Raphaelites. Oscar Wilde is also associated with *Patience*, although he was only just making his way. The 'effeminacy' of the two poets in the show should not be seen as 'gay'. At that time foppish behaviour was the mark of the womaniser, a strategy to seduce the fair sex! *Patience* is sometimes updated - there have been hippie and 'beat poet' versions - but we think you can appreciate the comedy unaided.

Sit back and enjoy the bubbling wit of Gilbert's lyrics and the precision and flow of Sullivan's musical vitality. The exuberance of their theatrical inventiveness, an inspiration to Broadway and The West End to this day, is on full display in *Patience*.

There are two of their best patter songs - '*Am I alone and unobserved*' and '*If you want a receipt for that popular mystery*'. There's a classic duel of men's and women's choruses as the maidens sigh '*In a doleful train*' while the jilted dragoons expostulate with '*And is not this ridiculous*'. There's a comic duet where Jane and Bunthorne plot the downfall of rival Grosvenor '*So go to him and say to him*' and the madcap interlude of '*A magnet hung in a hardware shop*', as well as the sentimental lyricism of '*Prithee pretty maiden*' and '*Love is a plaintive song*' and the great sextet that graces the huge finale of Act I, '*I hear the soft note of the echoing voice of an old, old love long dead*'.

Our marvellous and loyal orchestra of professional musicians is here to bring the score to life under our ever-vigilant Musical Director Mr Bob Drywood, and we are delighted that Lynne Myhill has joined us as Director, but chiefly grateful to 'yourselves', our audience. I hope you have a good evening.

Noel Ensoll
Chairman

The Orchestra

Violin	Ben Jones
Cello	Charles Martin
Flute/Piccolo	Christine Chappell
Clarinet	John Chappell
Horn	Sally Hannan
Bassoon	William Ward
Percussion	Bob Spoore
Piano	Edward Greenhalgh

THE STORY

ACT ONE

In front of Castle Bunthorne we find a group of "lovesick maidens", all of them in love with the aesthetic poet Bunthorne. However, Lady Jane, the oldest and plainest of the ladies, tells them that Bunthorne has his heart set on the simple milkmaid Patience. Patience confesses that she has never loved anyone and is glad she hasn't because love seems to make everyone miserable! Soon, the ladies' old sweethearts, the Dragoon Guards, arrive and find Bunthorne in the throes of poetical composition pretending to ignore the fawning ladies; he then reads his poem and leaves. The dragoons are ready to propose but they are rebuffed and mocked by the aesthetic ladies. The Dragoons, reeling from this insult, depart.

Bunthorne confesses that his aestheticism is a sham and mocks the movement's pretensions. He reveals to Patience that he does not really like poetry, but she tells him that she could not love him. Lady Angela rhapsodises to Patience upon love as the one truly unselfish pursuit in the world, Patience is so impressed by this eloquence that she promises to fall in love at the earliest opportunity. The opportunity presents itself in the form of Archibald Grosvenor, another aesthetic poet who turns out to be Patience's childhood love. He has grown up to be the infallible, widely loved poet known as "Archibald the All-Right" (a celebrity of his time). They declare themselves in love but the realisation that Grosvenor is a 'perfect being' means that for Patience to love him would be a selfish act, and therefore not true love; so, they must part.

Bunthorne is heartbroken by Patience's rejection and decides to raffle himself off among his followers, the proceeds going to charity. The Dragoons interrupt the proceedings, and attempt to reason with the ladies, but the ladies are too busy clamouring for tickets to the raffle to listen. Just as Bunthorne is handing the bag to the unattractive Jane, ready for the worst, Patience arrives and proposes to unselfishly sacrifice herself by loving the poet. A delighted Bunthorne accepts immediately, and his followers, their idol lost, return to the Dragoons. All seems resolved until Grosvenor enters and the ladies, finding him poetic, aesthetic, and far more attractive than Bunthorne, become his followers instead, much to the dismay of the Dragoons, Patience, Bunthorne and especially Grosvenor himself.

ACT TWO

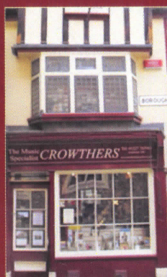
Lady Jane, accompanying herself on the cello, laments the passing of the years and expresses her hope that Bunthorne will "secure" her before it is too late. Meanwhile, Grosvenor wearily entertains the ladies and begs to be given a half-holiday from their cloying attentions. The Dragoons' Major, Colonel, and Duke attempt to earn their partners' love by converting to the principles of aestheticism. Then Patience confesses her affection for Grosvenor to Bunthorne, who is naturally furious at the revelation; he confronts Grosvenor threatening him with a dire curse unless he becomes an ordinary young man, which (somewhat thankfully) he does. At the end we will discover who is Bunthorne's Bride!

Crowthers

OF CANTERBURY

The Music Specialist

Instruments • Repairs • Accessories • Sheet Music • CDs



www.crowthersofcanterbury.co.uk

ian@crowthersofcanterbury.co.uk

1 The Borough, Canterbury, Kent CT1 2DR

Tel: 01227 763965

(OPPOSITE KING'S SCHOOL)



For all your music needs

est 1989



Ladies of the cast



Gentlemen of the cast

Musical Numbers

Act One – Outside Castle Bunthorne

1. Twenty love-sick maidens we Angela, Ella & Ladies Chorus
2. Still brooding on their mad infatuation Patience, Saphir, Angela & Chorus
- 2a. I cannot tell what this love may be Patience & Chorus
- 2b. Twenty love-sick maidens we Ladies Chorus
3. The soldiers of our Queen Colonel & Chorus of Dragoons
4. In a doleful train Angela, Ella, Saphir, Bunthorne, & Chorus
- 4a. Twenty love-sick maidens we Ladies Chorus
5. When I first put this uniform on Colonel & Chorus of Dragoons
6. Am I alone and unobserved? Bunthorne
7. Long years ago, fourteen maybe Patience & Angela
8. Prithce, pretty maiden Patience & Grosvenor
- 8a. Though to marry you would very selfish be Patience & Grosvenor
9. Let the merry cymbals sound Ensemble

There will be an interval of 20 minutes

Act Two – A glade near Castle Bunthorne

10. On such eyes as maidens cherish Ladies Chorus
11. Sad is that woman's lot Lady Jane
12. Turn, oh turn, in this direction Ladies Chorus
13. A magnet hung in a hardware shop Grosvenor & Ladies Chorus
14. Love is a plaintive song Patience
15. So go to him, and say to him Lady Jane & Bunthorne
16. It's clear that mediaeval art Duke, Major, & Colonel
17. If Saphir I choose to marry Angela, Saphir, Duke, Major, & Colonel
18. When I go out of door Bunthorne & Grosvenor
19. I'm a Waterloo House young man Grosvenor & Ladies Chorus
20. After much debate internal Ensemble

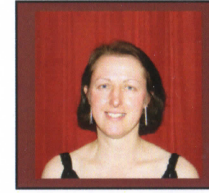
The Cast



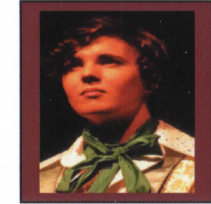
The Lady Jane
Maggie Cannon



Bunthorne
Maverick Hayre



Patience
Sarah Miles



Grosvenor
Joseph Hodges



The Lady Angela
Patti Bowling



Duke
David Mossman



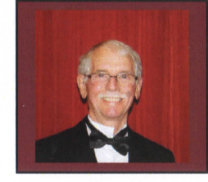
The Lady Saphir
Pam Hayfield



Colonel
Tim Baker

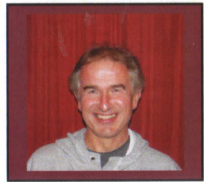


The Lady Ella
Pat Drywood

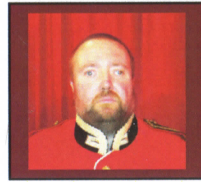


Major
Mike Kendrick

Chorus of Dragoons



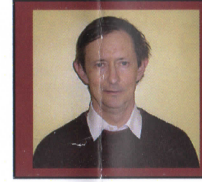
Peter Berry



Chris Clark



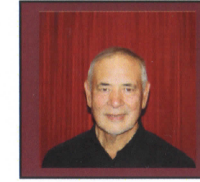
Jo Eddington



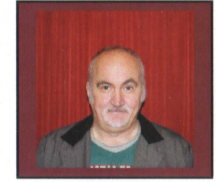
Noel Ensoll



Luke Humphries



Roger Lee



Solicitor
Mike Sax

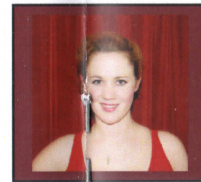
Chorus of Ladies



Melanieann Aster



Jill Baxter



Amy Bevan



Pauline Booker



Marion Duplany



Carol Evans



Eve Frampton



Melanie Little



Betty Reid



Fran Shaw



THE PRODUCTION TEAM

Stage Manager	Andrea Vigo
Deputy Stage Managers	Brian Booker Laura Woodrow
Assistant Stage Manager	Ann Harmes
Wardrobe Mistress	Pam Hayfield & Patti Bowling
Wigs	Pauline Booker
Lighting	Michael Wheatley-Ward
Properties	Pauline Landau
Prompt	Terrie Wheatley-Ward
Rehearsal Pianist	Edward Greenhalgh
Front of House	Eve Frampton & Karen Palmer
Orchestra Arranger	Jill Baxter
Publicity	Noel Ensoll, David Mossman, Andi Vigo
Publicity Photos	Craig Potter
Posters	Adam Watson
Programme	Carol Evans
Programme cover design	Adam Watson
Raffle	Friends of the Society

Brewer & Howard

10 HARBOUR STREET RAMSGATE CT11 8HA

Tel: 01843 587766

e.mail: brewersshoes@btinternet.com

Quality Ladies, Gents & Children's
Footwear

Premium Brands Including:

Barkers, Loakes, Geox, Ecco, Tamaris, Rieker
Hush Puppies, Joseph Siebel, Romika
Hunters and more.....



Hush Puppies

Loake
SHOEMAKERS

ecco

Stationery	Publicity	Personal
NCR Sets	Flyers	Calendars
Comp Slips	Posters	Invitations
Letterheads	Brochures	Greeting Cards
Business Cards	Newsletters	

...and much, much more instore

Sharp Printing Services

your **print** department

108 High Street, Broadstairs, Kent CT10 1JB

T 01843 600 123 F 01843 600 111 E info@sharpprinting.co.uk W www.sharpprinting.co.uk

If it's on card
or paper then
99.9%
of the time we can
print it for you!!

The Harbour Café Bar Kitchen

- Stylish, clean and relaxed
- Home-made food
- Quality all-day breakfast
- Smithfield burgers
- Traditional Sunday Lunch
- Continental salads, tarts and platters
- Fine Italian coffee
- Speciality beers
- Extensive wine list
- Open Tuesday to Sunday from 9am to 5/6pm ish!
- Late nights Friday and Saturday
- Open every Bank Holiday Monday
- Unrivalled location with stunning sunset views
- Available for private parties, functions and corporate events.



10 The Parade, Margate, Kent, CT9 1EZ

(01843) 290110

Acknowledgements

ROS would like to thank the following:

The milk persons of Dairy Crest for delivering leaflets
 Father Marcus at St Ethelbert's Church for our rehearsal rooms
 The staff at The Sarah Thorne Memorial Theatre for their help
 Ken Pickett for the stage cloths
 David Mossman for sponsoring the advertising in the Kent Messenger
 Laura Archer at the Thanet Gazette for her support of the production
 Peter Barnett at K M Thanet Extra for his support of the production
 Eileen O'Brien for publicity at the Sarah Thorne Theatre
 Jacque Rogers for being the super stand-in at rehearsals and the matinee
 All businesses & organisations who have advertised in this programme

Walpole Bay Hotel

One of Thanet's hidden treasures

Museum of Social History
 Art Gallery
 Napkin Art
 Tea Rooms
 Edwardian Restaurant
 Snooker Room
 Lounge Bar
 Ballroom
 Veranda

Cream Teas
 from £5.75
 Sunday Lunch
 £19.95 with
 our resident
 pianist

01843 221703
 www.walpolebayhotel.co.uk
 We would love to see you!



Bluebeach
Solutions

www.bluebeachsolutions.com

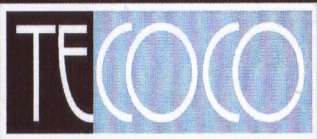


Website design and hosting
 E-commerce
 Content Management Systems
 Customer Relationship Management
 Web-based business solutions
 Consultancy



Call us on: 07545 538680 or
 email: ray@bluebeachsolutions.com





Fine Loose Leaf Tea & Chocolate

Here in our little Broadstairs store you will find a very warm welcome and discover that we are stocked to the rafters with our very own blended loose leaf teas, tea accessories and luxury chocolates.



All of our tea blends and infusions are bespoke, they have been lovingly blended by our tea expert to give the finest quality taste experience that you will not be able to replicate anywhere else! Each blend is visible loose leaf, real fruit, herbs and spices; not dust which is found in an everyday teabag. These gorgeous blends are then hand weighed and packaged by us here ready for you to savour.



We also feature a variety of the finest European chocolates, English and local artisan chocolatiers, fine Belgian chocolates as well as gorgeous drinking chocolates and fudge.

An extensive range of accessories to suit all tastes and budgets is also available in store.

Call us on: 01843 863933

Or email us at: info@tecoco.co.uk



TECOCO
100 High Street,
Broadstairs, Kent CT10 1JB.

JOIN ROS!

You too can enjoy the benefits of Ramsgate Operatic Society membership

Become an active member - on or off stage - take part in fantastic productions, help organise sets, enjoy social functions, make new friends.

Become a Friend of ROS, enjoy our company at shows and social functions

FUTURE PRODUCTIONS

On Thursday 15th November we will be holding an evening at St Ethelbert's Church Hall where a number of shows will be presented to the club by our members. From these presentations we will select our next productions.

CONTACT US

If you would like more information about ROS, an application to join, or you have a suggestion for a future production, please contact the club secretary

Mrs Maggie Cannon,
telephone - 07989 328544
or email -
magcannon@hotmail.co.uk

Officers and Committee

President
Chairman
Secretary
Treasurer
Members

Sylvia Blogg
Noel Ensoll
Maggie Cannon
Brian Booker
Melanieann Aster, Maverick Hayre
Craig Potter, Betty Reid, Andi Vigo
Stephen Foster (co-opted)

Social Committee

Pam Hayfield (Chair) Jill Baxter, Pauline Booker, Eve Frampton, Mel Little, Sarah Miles.

Honorary Members

Jill Baxter, Sylvia Blogg, Marjorie Butler, Eve Frampton, Aldwyth Humphries, George Martin, Mary Patten, Betty Reid, Jean Tilley, Margaret Woods

Life Members

Mrs L Leask, Mrs M Woods, Mrs S Williams

Life Vice -Presidents

Miss R Armistead, Mrs S Blogg, Mr & Mrs M Butler,
Mr & Mrs J Connell, Mr & Mrs J Dixon, Mr B Fagg,
Mr J Frampton, Mr G Gransbury, Mr & Mrs G Hemmings,
Mr S Humphries, Mrs F Lockwood, Mr G Martin, Mrs M Patten,
Mr & Mrs D Wells

PAST PRODUCTIONS

1961	The Mikado	1990	Oh, What a Lovely War Half a Sixpence
1962	The Gondoliers	1991	The Gondoliers Brigadoon
1963	The Pirates of Penzance	1992	HMS Pinafore Oklahoma
1964	Iolanthe	1993	The Pirates of Penzance A Century of Song
1965	HMS Pinafore/Trial by Jury	1994	Showboat The Mikado
1966	Ruddigore	1995	Kiss Me Kate The Merry Widow
1967	Yeoman of the Guard	1996	Ruddigore My Fair Lady
1968	Princess Ida	1997	White Horse Inn Anything Goes
1969	Merrie Engando	1998	Iolanthe The Gypsy Baron
1970	The Mikado	1999	Annie Get Your Gun HMS Pinafore/Trial by Jury
1972	The Gondoliers	2000	Blitz The Gondoliers
1973	La Vie Parisienne	2001	Orpheus in the Underworld The Yeoman of the Guard
1974	The Merry Widow Patience	2002	Fiddler on the Roof Die Fledermaus
1975	The Desert Song The Pirates of Penzance	2003	Me & My Girl The Mikado
1976	My Fair Lady Yeoman of the Guard	2004	The Beggar's Opera The Pirates of Penzance
1977	Song of Norway HMS Pinafore	2005	The Merry Widow Carousel
1978	Bless the Bride The Sorcerer/Trial by Jury	2006	Guys and Dolls Iolanthe
1979	Orpheus in the Underworld The Mikado	2007	HMS Pinafore
1980	No, No Nanette The Gondoliers	2008	Anything Goes Carmen the Musical
1981	White Horse Inn Cowardy Custard	2009	The Sorcerer/Trial by Jury Calamity Jane
1982	The Mountebanks Ruddigore	2010	The Pirates of Penzance (In the 21 st Century) South Pacific
1983	Oklahoma The Pirates of Penzance	2011	The Mikado Half A Sixpence
1984	Guys and Dolls Sound of His Music	2012	Marguerite
1985	Fiddler on the Roof Vienna, City of Song		
1986	Carousel Yeoman of the Guard		
1987	Calamity Jane HMS Pinafore		
1988	Chu Chin Chow The Mikado		
1989	The Pajama Game The Sorcerer/Trial by Jury		

Tim
Baker
Associates

Supporting Ramsgate Operatic Society

Consulting Structural Engineers
Structural Appraisal & Design
Party Wall matters
Structural Surveys
Expert Witness

Lavender Cottage, Marley Lane,
Hoath, Canterbury, CT3 4JY

Telephone: 01227 860453

Mobile: 07974 812045

www.timbakerassociates.co.uk
enquiries@timbakerassociates.co.uk